



RAM POWER LTD

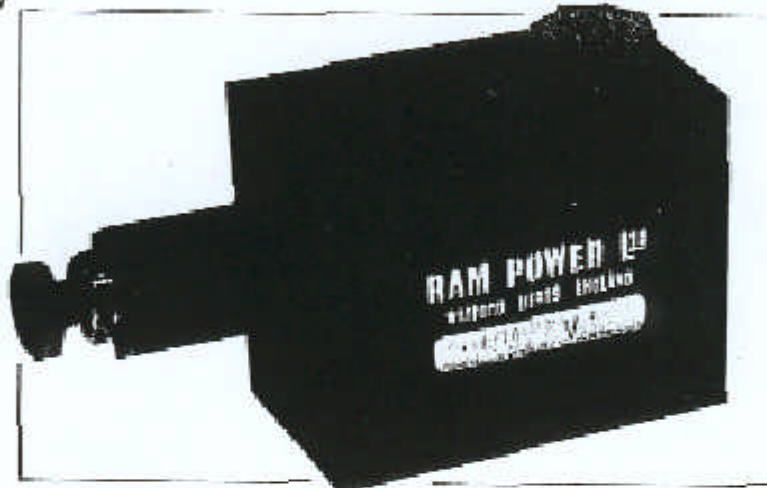
16 GREENHILL CRESCENT, WATFORD BUSINESS PARK, WATFORD WD18 6SE

TEL: +44 (0) 1923 231881

mpwr@aol.com

FAX: +44 (0) 1923 245856

250-V4-SV



SEQUENCE VALVE

The Ram Power Sequence Valve is designed to give priority to one part of a hydraulic circuit before another. More than one can be used in series to "cascade" cylinders in one direction allowing them all to return together in the reverse direction.

Due to the balanced design of the valve once the set pressure has been reached on the downstream side of the circuit further flow takes place with minimal pressure loss.

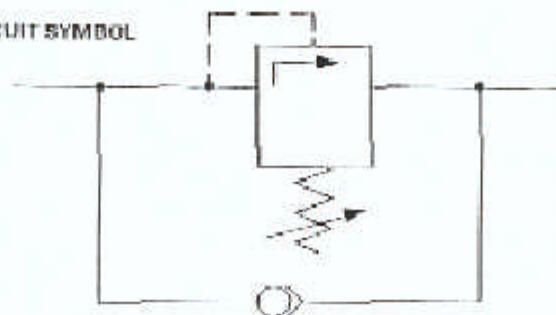
The large area soft seated non return valve permits free return flow with minimum pressure loss and positive leak free sealing in the sequenced direction.

This valve is particularly useful in hydraulic work holding circuits where the clamps are required to operate in a predetermined order. For instance to locate a component against fixed stops prior to final clamping.

GENERAL SPECIFICATION

Sequence range :	500 P.S.I. (35 BAR) to 1500 P.S.I. (104 BAR)
Factory setting :	1000 P.S.I. (69 BAR)
Pressure tested to:	6000 P.S.I. (414 BAR)
Weight :	14.5 oz (411 g)

CIRCUIT SYMBOL



FOR FULL DIMENSIONS
SEE OVERLEAF